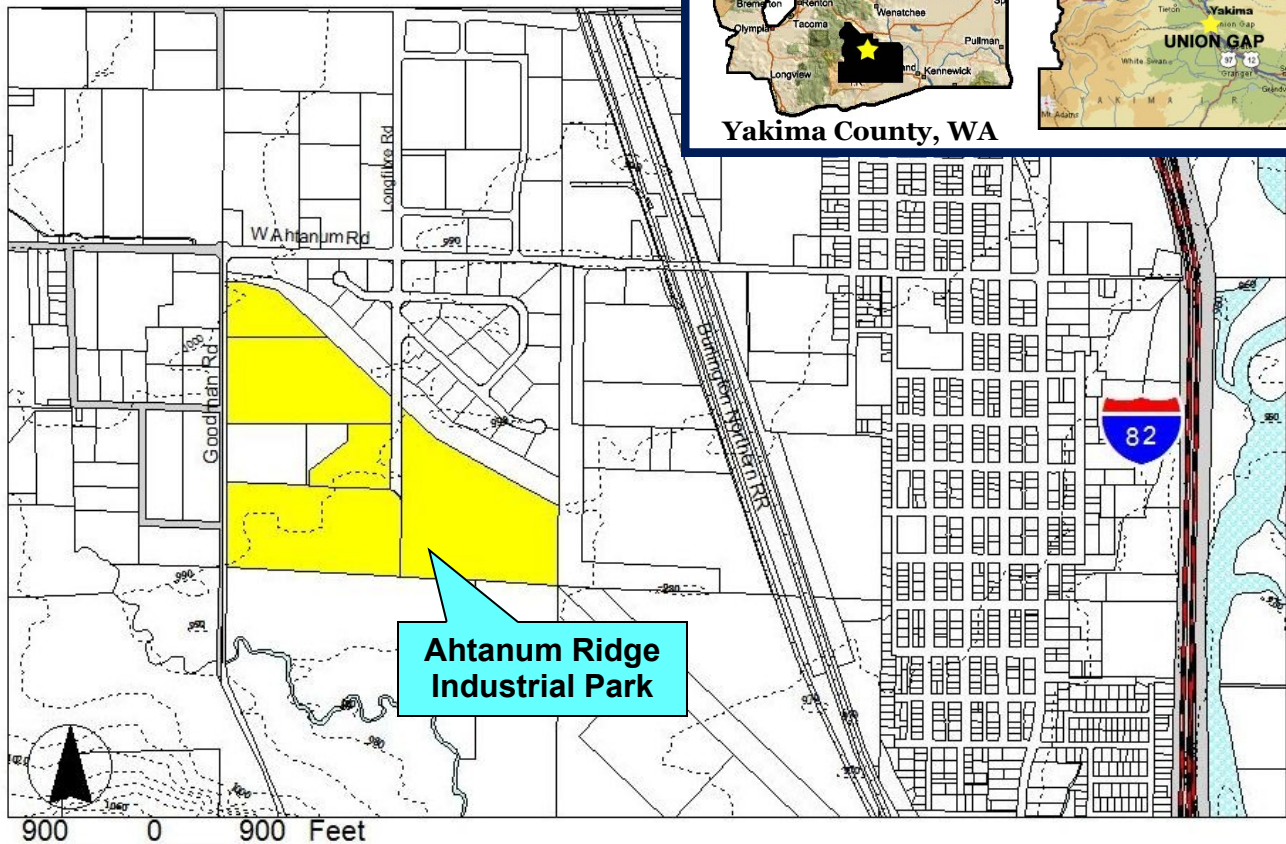


Ahtanum Ridge Industrial Park

Union Gap, Washington



Yakima County, WA



GOODMAN RD, UNION GAP, WA

FAST FACTS

- Land area:* 84.3 acres
- Building:* No
- Price:* \$.75 to \$1.50 sq. ft.
- Zoning:* Light Industrial/Commercial
- Transportation:*
 - Yakima Transit Services
 - 5 Minutes to Interstate 82
 - 5 Minutes to Yakima Air Terminal
 - 2.5 Hours to Seattle
- Water:* 12" Line on site
- Sewer:* 15" Line on site
- Natural Gas:* 4" Line on site by Cascade Natural Gas
- Telecommunications:* CenturyLink Communications and Charter Communications
- Electricity:* 3-phase by Pacific Power
- Estimated Labor Force (30 Miles):* 89,484



CONTACT INFO

Terry McGuire, owner
 509.952.7880
 terry_4444@hotmail.com

Information updated on July, 2011 and provided to you by:

New Vision, the Yakima County Development Association

10 N. 9th St. | PO Box 1387 | Yakima, WA 98907-1387 | 509.575.1140 | info@ycda.com | www.ycda.com

Information was obtained from sources deemed to be reliable. YCDA does not, however, guarantee the accuracy of this data



Ahtanum Ridge Industrial Park Union Gap, Washington

Aerial



Information updated July, 2011 and provided to you by:
New Vision, the Yakima County Development Association
10 N. 9th St. | PO Box 1387 | Yakima, WA 98907-1387 | 509.575.1140 | info@ycda.com | www.ycda.com
Information was obtained from sources deemed to be reliable. YCDA does not, however, guarantee the accuracy of this data

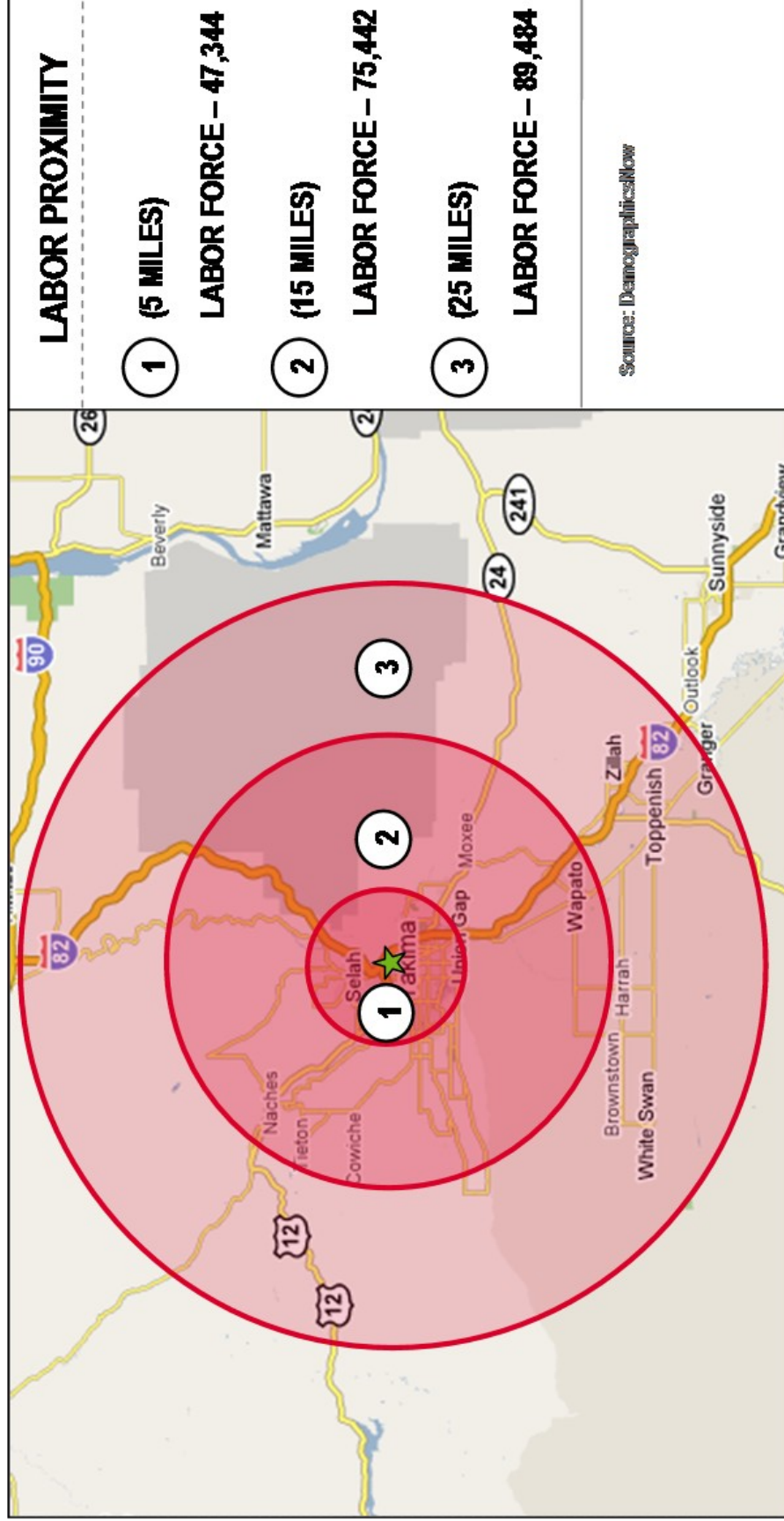


Ahtanum Ridge Industrial Park Utility Detail

Ahtanum Ridge Industrial Park
Union Gap, Washington



Labor Radius



Information updated November, 2010 and provided to you by:

New Vision, the Yakima County Development Association

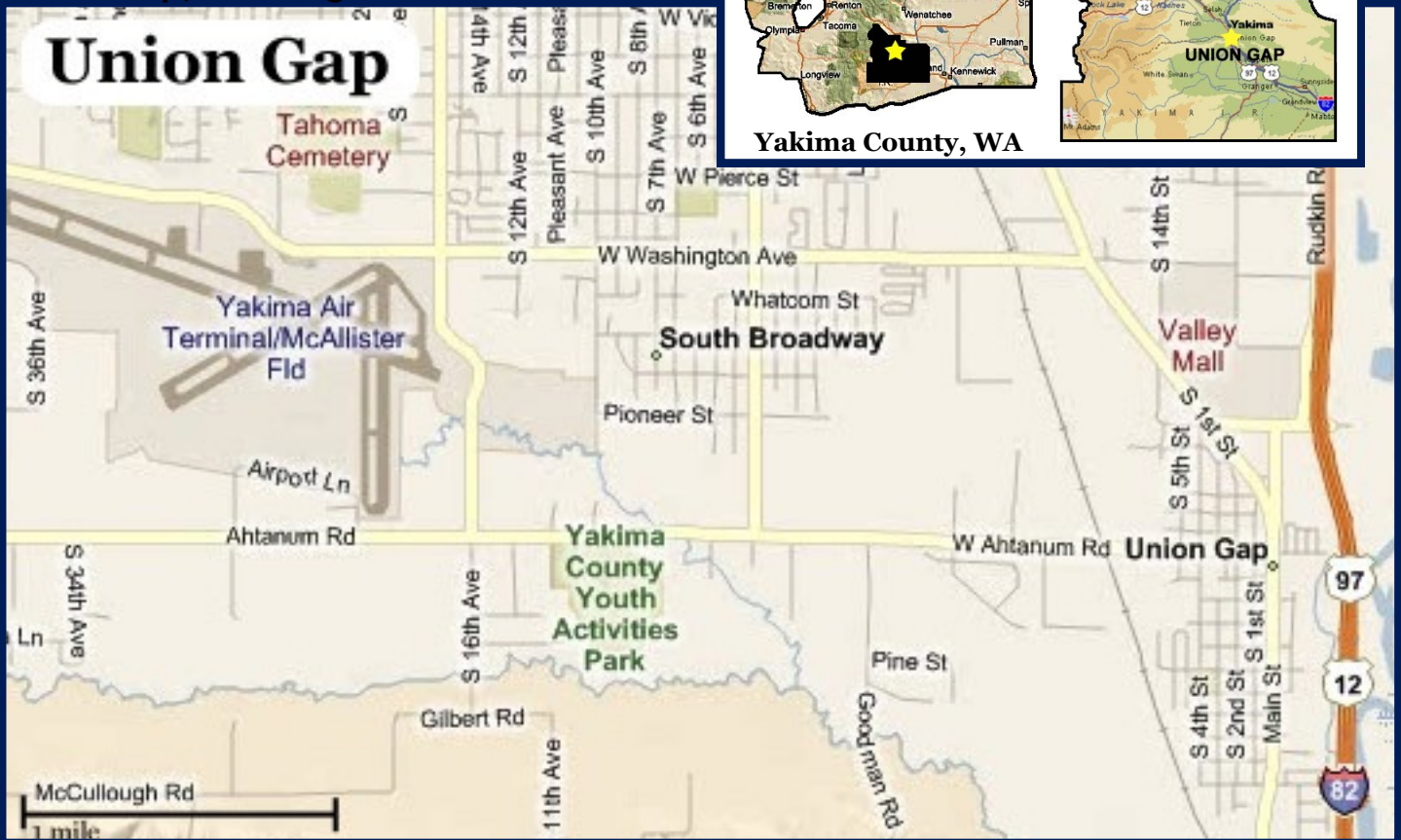
10 N. 9th St. | PO Box 1387 | Yakima, WA 98907-1387 | 509.575.1140 | info@ycda.com | www.ycda.com

Information was obtained from sources deemed to be reliable. YCDA does not, however, guarantee the accuracy of this data



Community Profile

Union Gap, Washington



LOCATION

Union Gap is situated on the Southern boundary of Yakima, four miles from Yakima city center. Union Gap is approximately 155 miles from Seattle, 180 miles from Portland and 200 miles from Spokane.

POPULATION

City of Union Gap - 6,047
Within 15 Miles - 175,924
Within 30 Miles - 228,704

GOVERNMENT

102 W. Ahtanum Road
Union Gap, WA 98903
Phone: (509) 248-0432 www.ci.union-gap.wa.us
Hours: 7:00 a.m. - 6:00 p.m.

Monday thru Thursday (Closed Fridays)
Form: Strong Mayor/Council. The seven-person council and the Mayor are elected by the citizens of Union Gap to four-year terms.

LIFESTYLE

Union Gap has four city parks, one with an indoor facility for events, the Central Washington Agriculture museum, parades, festivals, shopping, and an active recreation program. Outdoor nearby activities include hunting, fishing, skiing, rafting, and hiking.

To learn more about local events, click [here](#)

MUSEUM

Central Washington Agricultural Museum
4508 Main Street, Union Gap, Phone: (509) 457-8735
April to October: Tues 9-3, Wed-Sat 9-5, Sun 1-4
November to March: Tues 9-3, Thursday-Sunday 1-4

LIBRARY

3104 S. First Street - (509) 452-4252
Hours: Tuesday thru Thursday 2:00 - 7:00 p.m.
Saturday 9:00 a.m.- 2:00 p.m.

TOP AREA EMPLOYERS

Atruim Windows & Doors	King Brothers Woodworking
Costco	Longview Fibre
CubCrafters	Magic Metals

HEALTHCARE

The Union Gap area supports several medical, dental, and chiropractic offices. Two regional hospitals are within 10 minutes in the city of Yakima.

SCHOOLS:

[The Union Gap School District #2](#) enrolls 640 students in their elementary and middle school. Grades 9 thru 12 are served by Yakima School District. Union Gap has one private high school serving 210 students. Learn more about LaSalle High School by clicking [here](#).

Childcare and preschool information on page three.