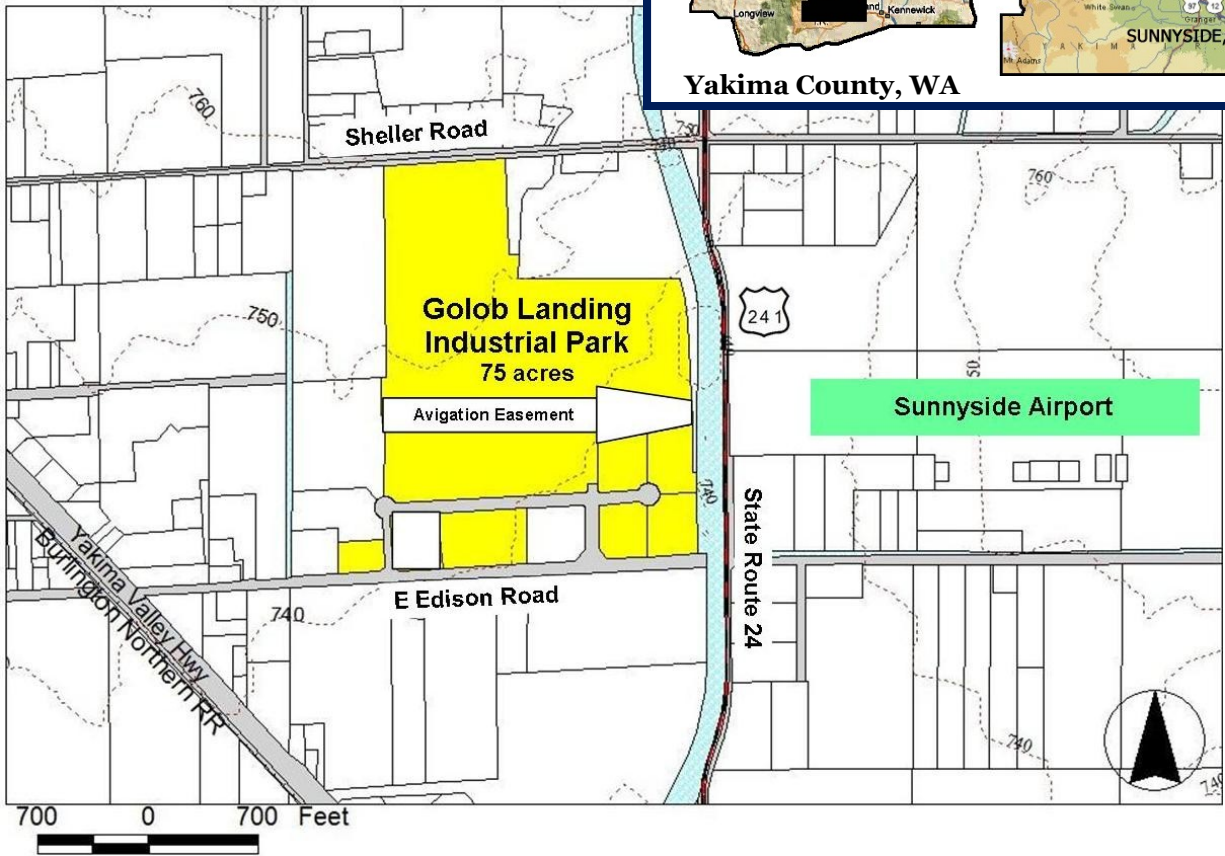


Golob Landing Industrial Park

Sunnyside, Washington



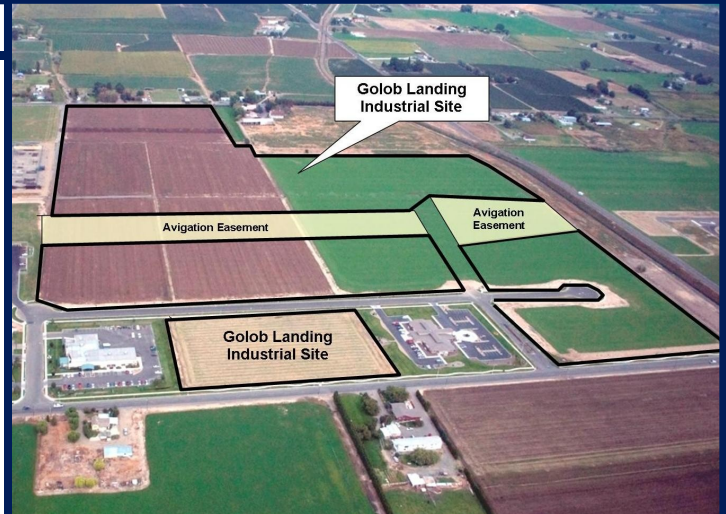
Yakima County, WA



E. EDISON ROAD, SUNNYSIDE, WA

FAST FACTS

Land area: 75 Acres
Building: No
Price: Negotiable Sale or Lease Options
Zoning: Light Industrial - 32 acres
 Heavy Industrial - 43 acres
Transportation:
 2 Minutes to Interstate 82
 40 Minutes to Yakima Air Terminal
 3 Hours to Seattle
Water: 12" line on E Edison & Sheller Roads
Sewer: 12" line on E Edison
Natural Gas: 4" Line at north end
Telecommunications: CenturyLink Communications
Electricity: Dual Feed—12,500 Volt Capacity
Estimated Labor Force (25 Miles): 41,108



CONTACT INFO

Amber Hansen, executive director
 Port of Sunnyside
 509.839.7678 | ahansen@portofsunnyside.com

Information updated on January, 2012 and provided to you by:

New Vision, the Yakima County Development Association

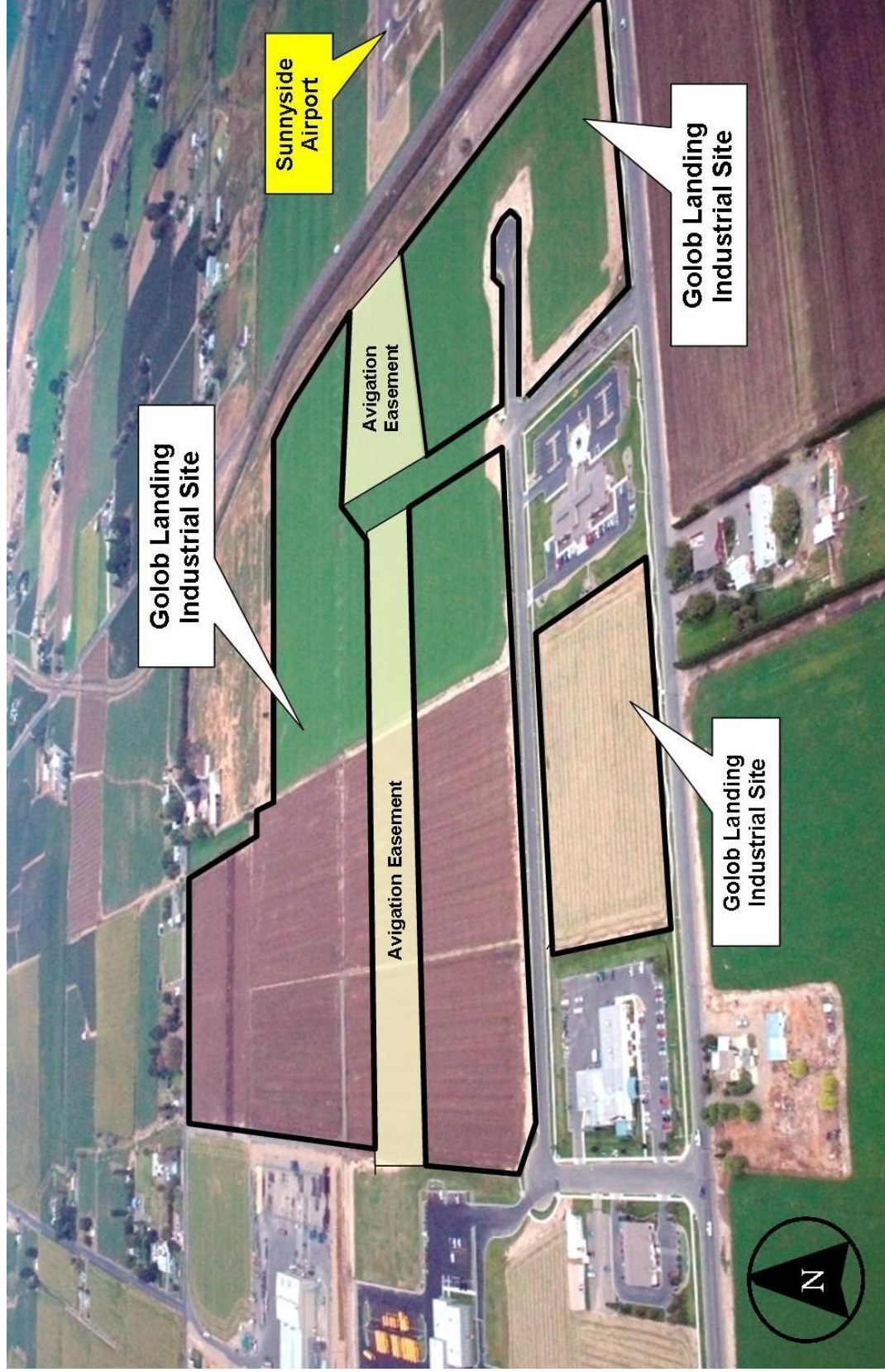
10 N. 9th St. | PO Box 1387 | Yakima, WA 98907-1387 | 509.575.1140 | info@ycda.com | www.ycda.com

Information was obtained from sources deemed to be reliable. YCDA does not, however, guarantee the accuracy of this data



Golob Landing Industrial Park Sunnyside, Washington

Aerial



Information updated January, 2012 and provided to you by:
New Vision, the Yakima County Development Association

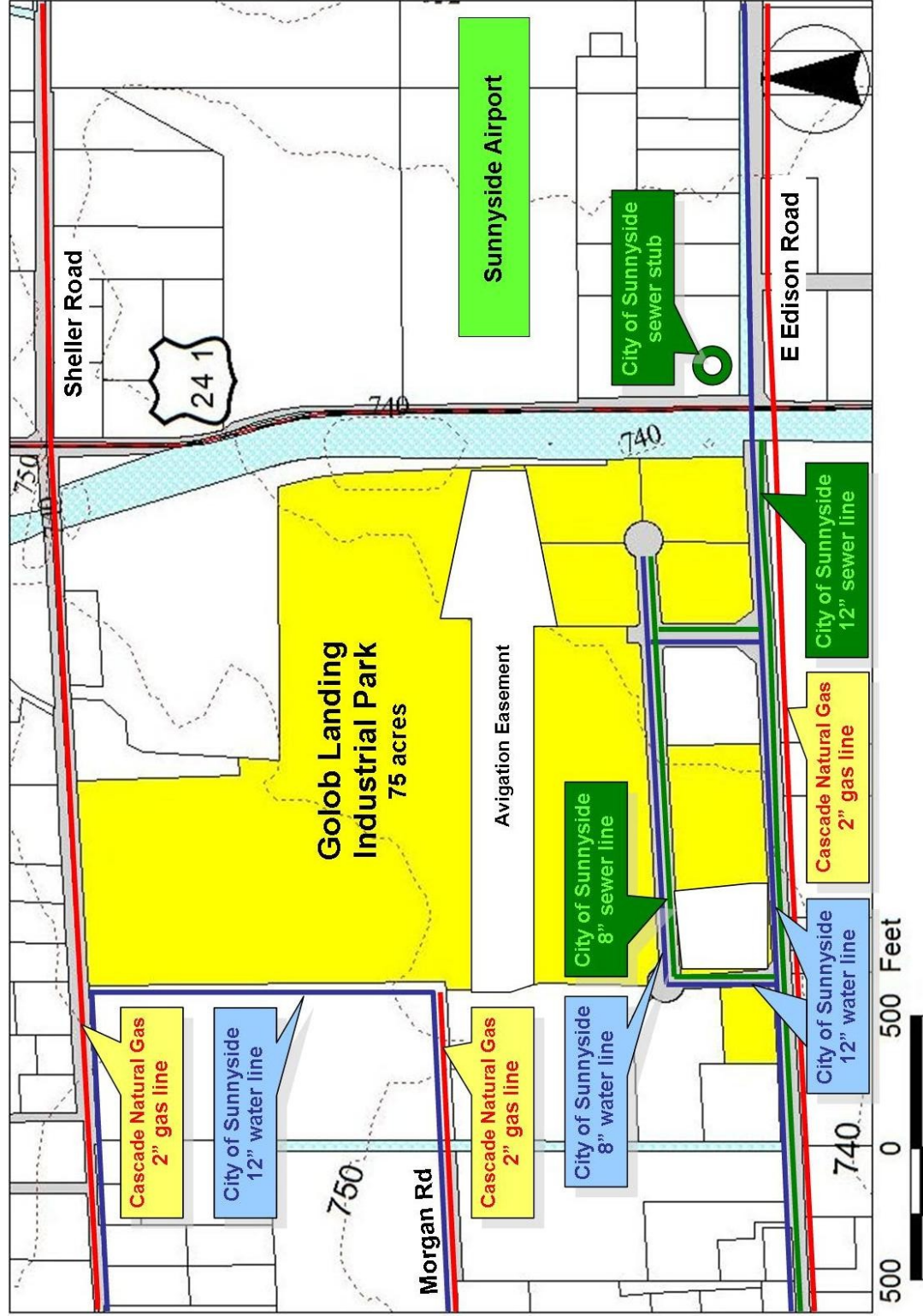
10 N. 9th St. | PO Box 1387 | Yakima, WA 98907-1387 | 509.575.1140 | info@ycda.com | www.ycda.com

Information was obtained from sources deemed to be reliable. YCDA does not, however, guarantee the accuracy of this data



Golob Landing Industrial Park Sunnyside, Washington

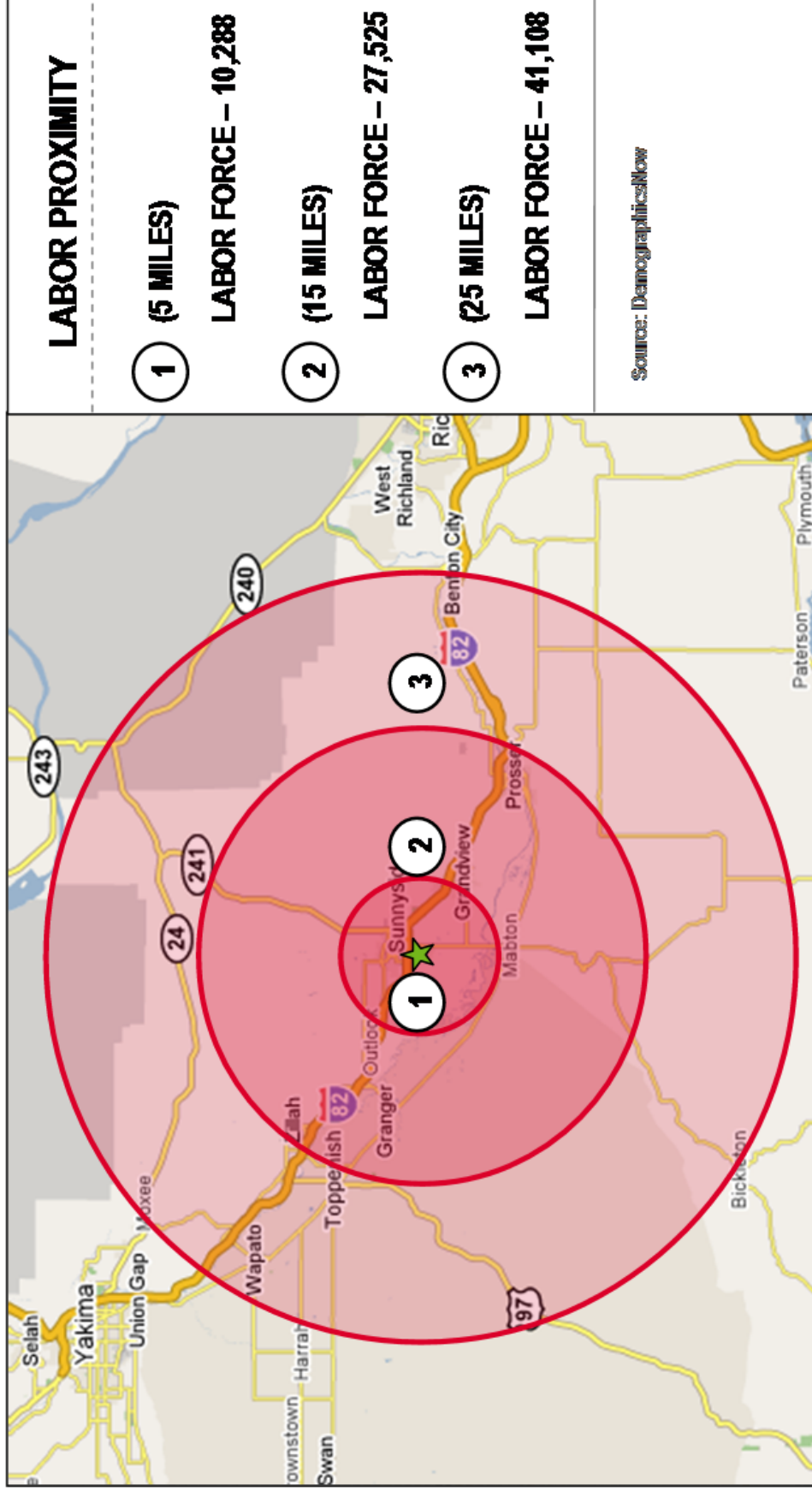
Utility Detail



Information updated January, 2012 and provided to you by:
New Vision, the Yakima County Development Association
10 N. 9th St. | PO Box 1387 | Yakima, WA 98907-1387 | 509.575.1140 | info@ycda.com | www.ycda.com
Information was obtained from sources deemed to be reliable. YCDA does not, however, guarantee the accuracy of this data



Labor Radius



Information updated November, 2010 and provided to you by:

New Vision, the Yakima County Development Association
 10 N. 9th St. | PO Box 1387 | Yakima, WA 98907-1387 | 509.575.1140 | info@ycda.com | www.ycda.com

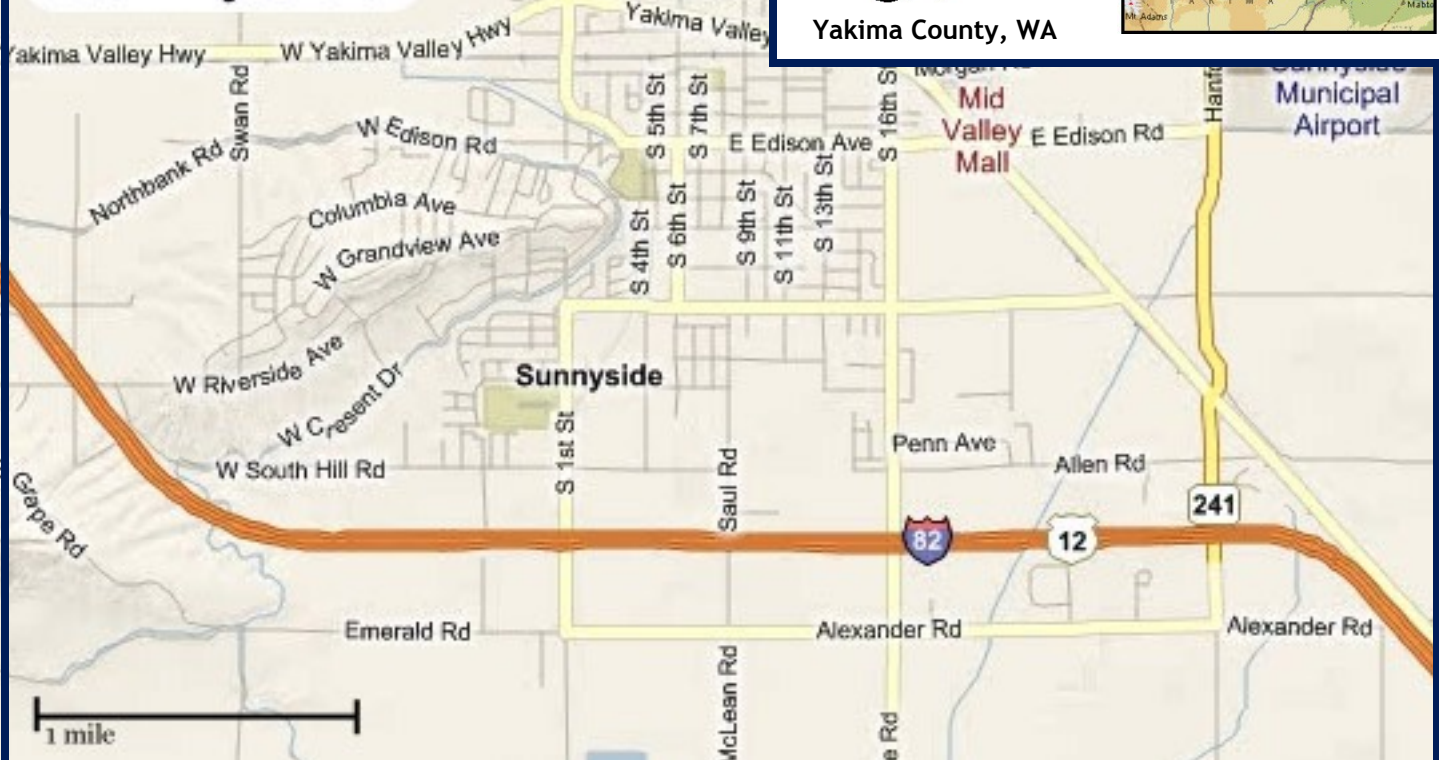
Information was obtained from sources deemed to be reliable. YCDA does not, however, guarantee the accuracy of this data



Community Profile

Sunnyside, Washington

Sunnyside



LOCATION

Sunnyside is centrally located at the midpoint of the I-82 corridor between Yakima (35 miles) and the Tri-Cities (45 miles). It is equidistant (approximately 180 miles) from Seattle, Spokane, and Portland, OR.

POPULATION

City of Sunnyside - 15,858
Within 15 Miles - 65,361
Within 30 Miles - 133,946

CITY GOVERNMENT

818 E. Edison Avenue
Sunnyside, WA 98944
Phone: (509) 837-3782 - www.ci.sunnyside.wa.us

7:30 AM to 6:00 PM

Monday through Friday

Form: Mayor/Council/Manager. The seven-person council is elected by the citizens of Sunnyside to four-year terms. The council appoints the Mayor to a two-year term.

QUALITY OF LIFE

There are over 61 acres of beautiful parks with a variety of playground equipment scattered throughout the city. Skate board enthusiasts will enjoy the Skate Board Park located at SunnyView Park. While you are visiting, be sure to enjoy our large swimming pool and new slide or, have a picnic in Central Park.

To learn about local events and activities , click [here](#)

MUSEUM

Sunnyside Historical Museum
4th St and Grant Avenue — (509) 837-6010 Phone
Open Thursday — Sunday 1:00 PM to 4:00 PM

LIBRARY

621 Grant - 509-837-3234
Hours: Monday -Thursday 9:30 - 9:00
Friday & Saturday 9:30-6:00; Sunday 1:00-5:00

TOP AREA EMPLOYERS

Sunnyside School District	Sunnyside Hospital
Independent Foods	Walmart
Valley Manufactured Homes	Canam Steel
West Farm Foods	Yakama Chief

HEALTHCARE

[Sunnyside Community Hospital](#), clinics, dentists and physicians are within city limits. Four additional hospitals are within 40 miles of Sunnyside.

SCHOOLS

[Sunnyside School District](#) has an early education school, four elementary schools, one middle school and two high schools (see page four for a more detailed profile).

There are two private elementary schools and one private early education school. Learn more about private school options at www.sunnysidechristianschool.org/

Childcare and preschool information on page three