

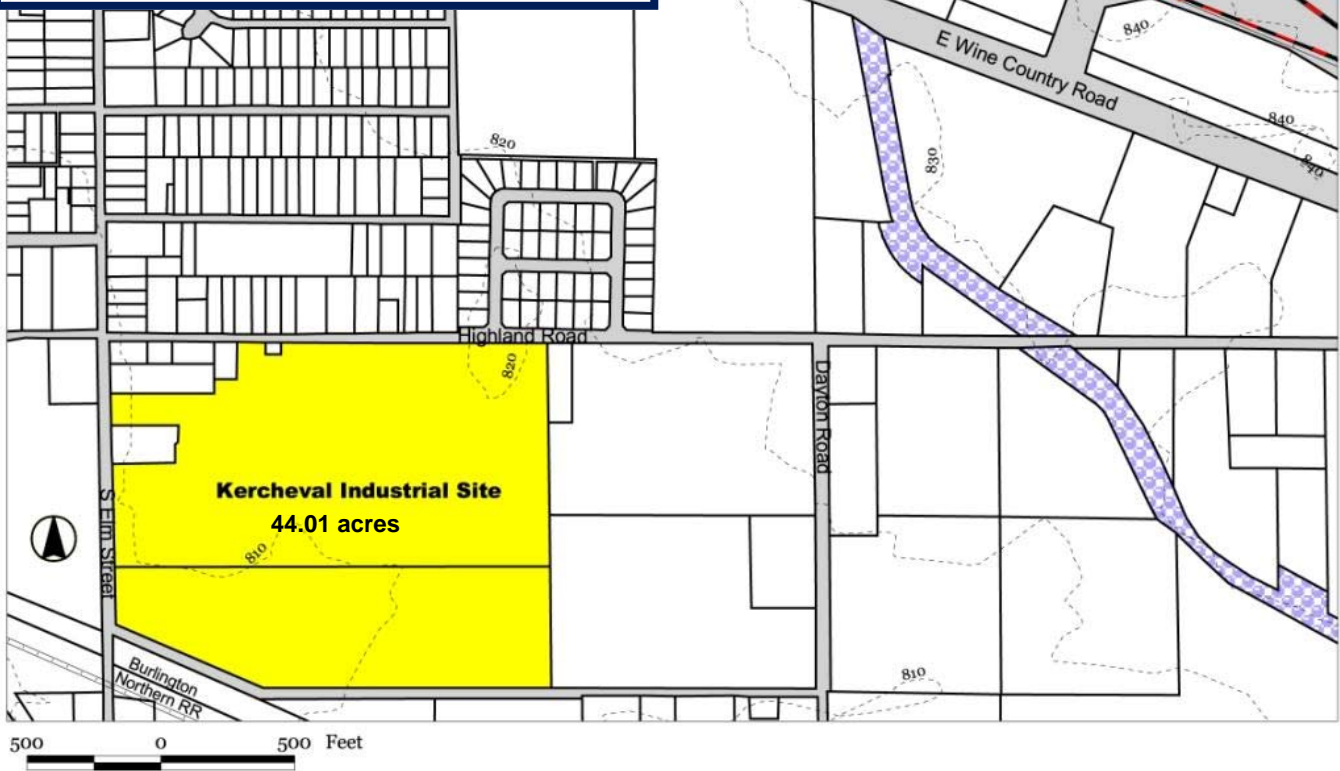
Kercheval Industrial Site

Grandview, Washington



Yakima County, WA

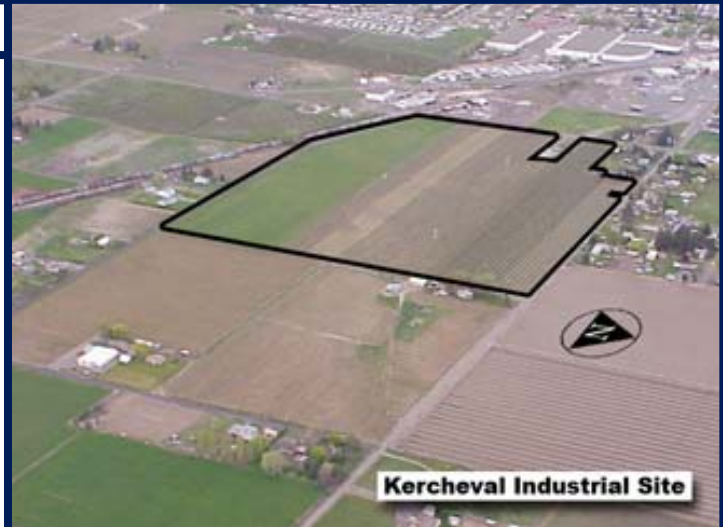
Grandview



ELM STREET & HIGHLAND ROAD, GRANDVIEW, WA

FAST FACTS

- Land area:* 44.01 acres
- Building:* No
- Price:* Negotiable
- Zoning:* Light Industrial
- Transportation:*
 - Adjacent to rail
 - 5 minutes to Interstate 82
 - 45 minutes to Yakima Air Terminal
 - 3 hours to Seattle
- Water:* 12" line on site at Highland Rd
- Sewer:* 8" Line on site at Highland Rd
- Natural Gas:* 2" line on Highland Rd and S Elm St
- Telecommunications:*
 - Fiber optics from CenturyLink Communications
- Electricity:* 3-phase, 12,470 volts at site on Highland Rd
- Estimated Labor Force (25 miles):* 38,929



Kercheval Industrial Site

CONTACT INFO

Jim Sewell, commissioner
 Port of Grandview
 509.480.4453 | sewell@charter.net

Information updated on February, 2012 and provided to you by:

New Vision, the Yakima County Development Association

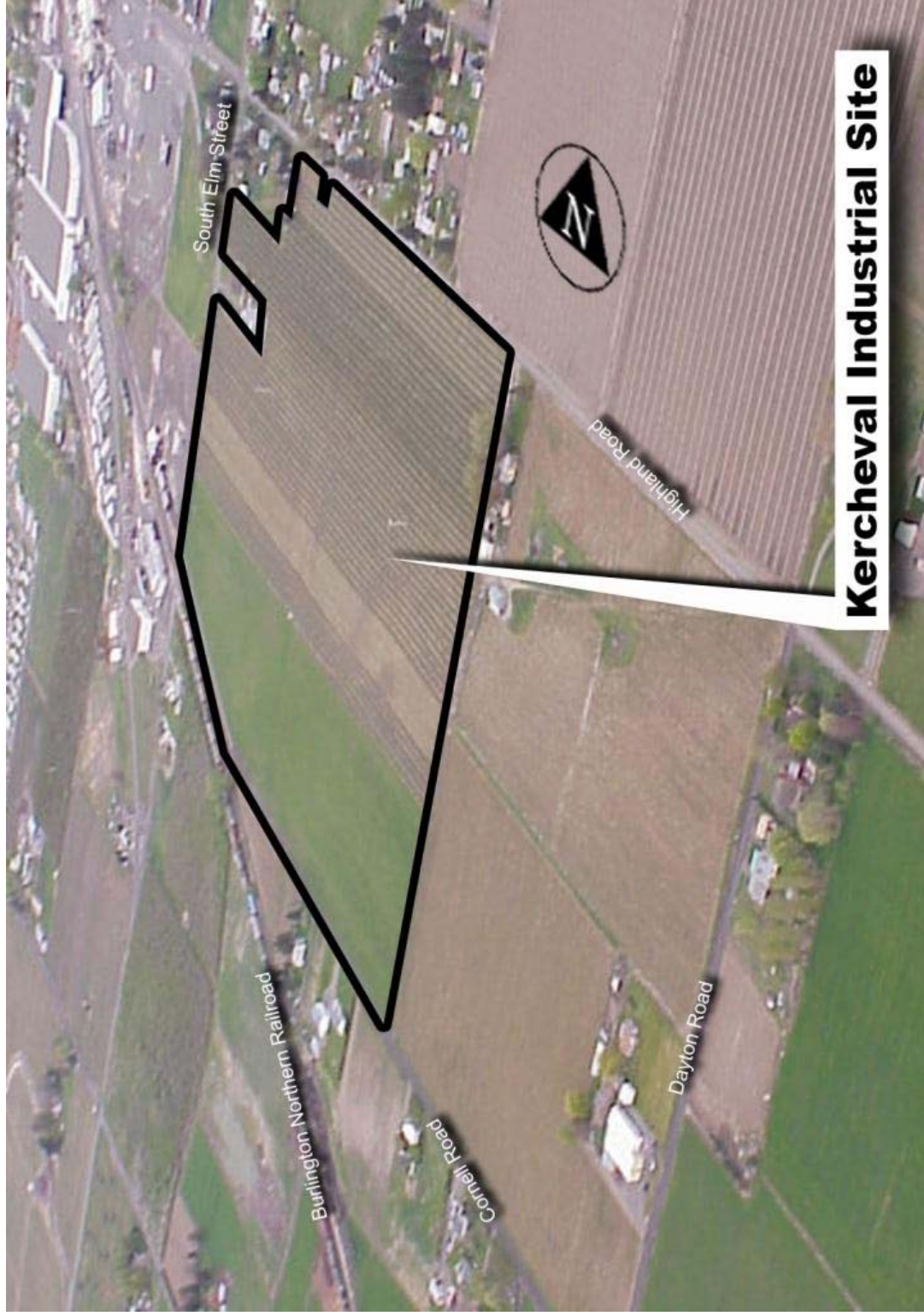
10 N. 9th St. | PO Box 1387 | Yakima, WA 98907-1387 | 509.575.1140 | info@ycda.com | www.ycda.com

Information was obtained from sources deemed to be reliable. YCDA does not, however, guarantee the accuracy of this data



Aerial

Kercheval Industrial Site
Grandview, Washington



Information updated February, 2012 and provided to you by:
New Vision, the Yakima County Development Association

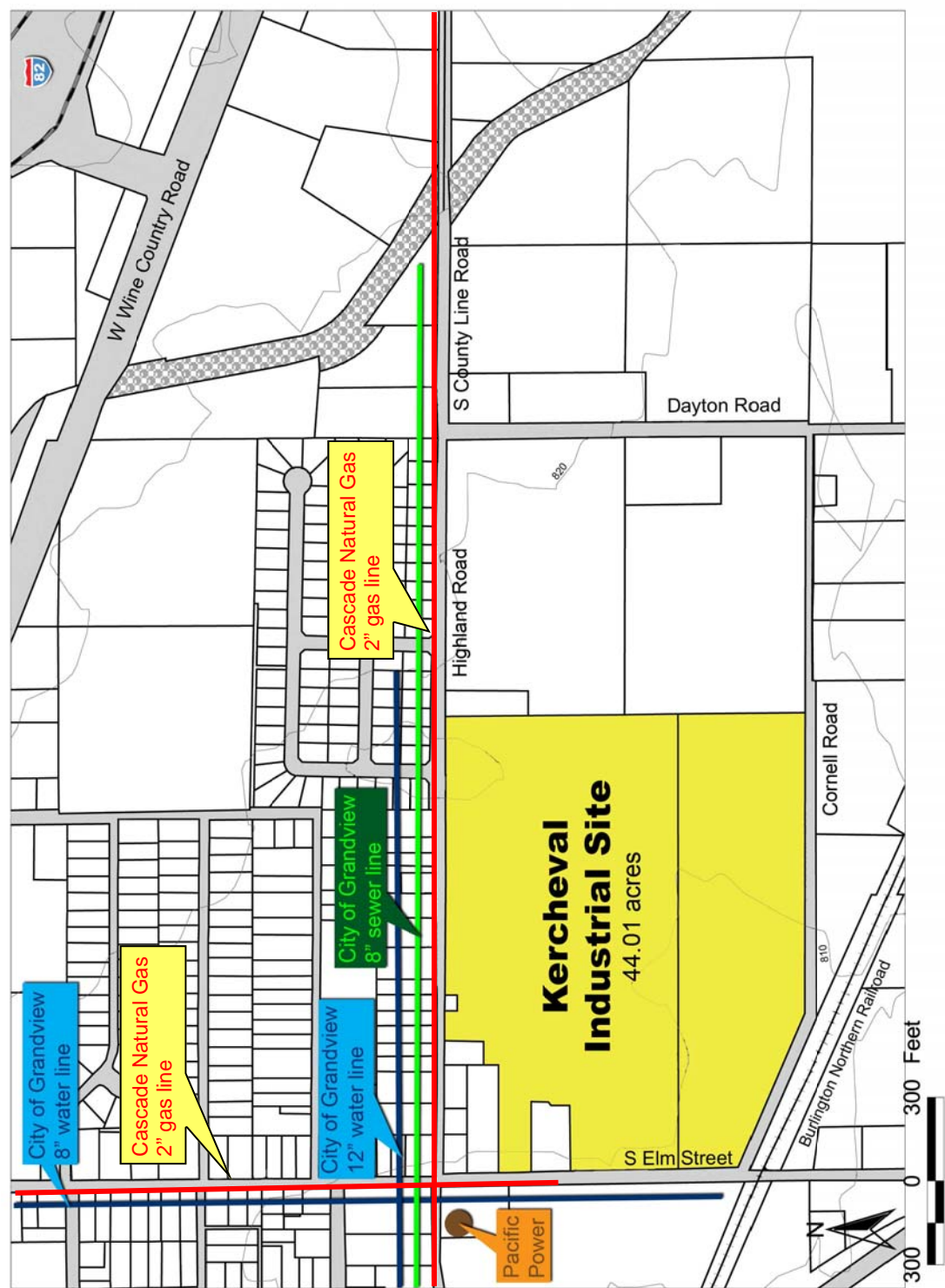
10 N. 9th St. | P.O. Box 1387 | Yakima, WA 98907-1387 | 509.575.1140 | info@ycda.com | www.ycda.com

Information was obtained from sources deemed to be reliable. YCDA does not, however, guarantee the accuracy of this data



Utility Detail

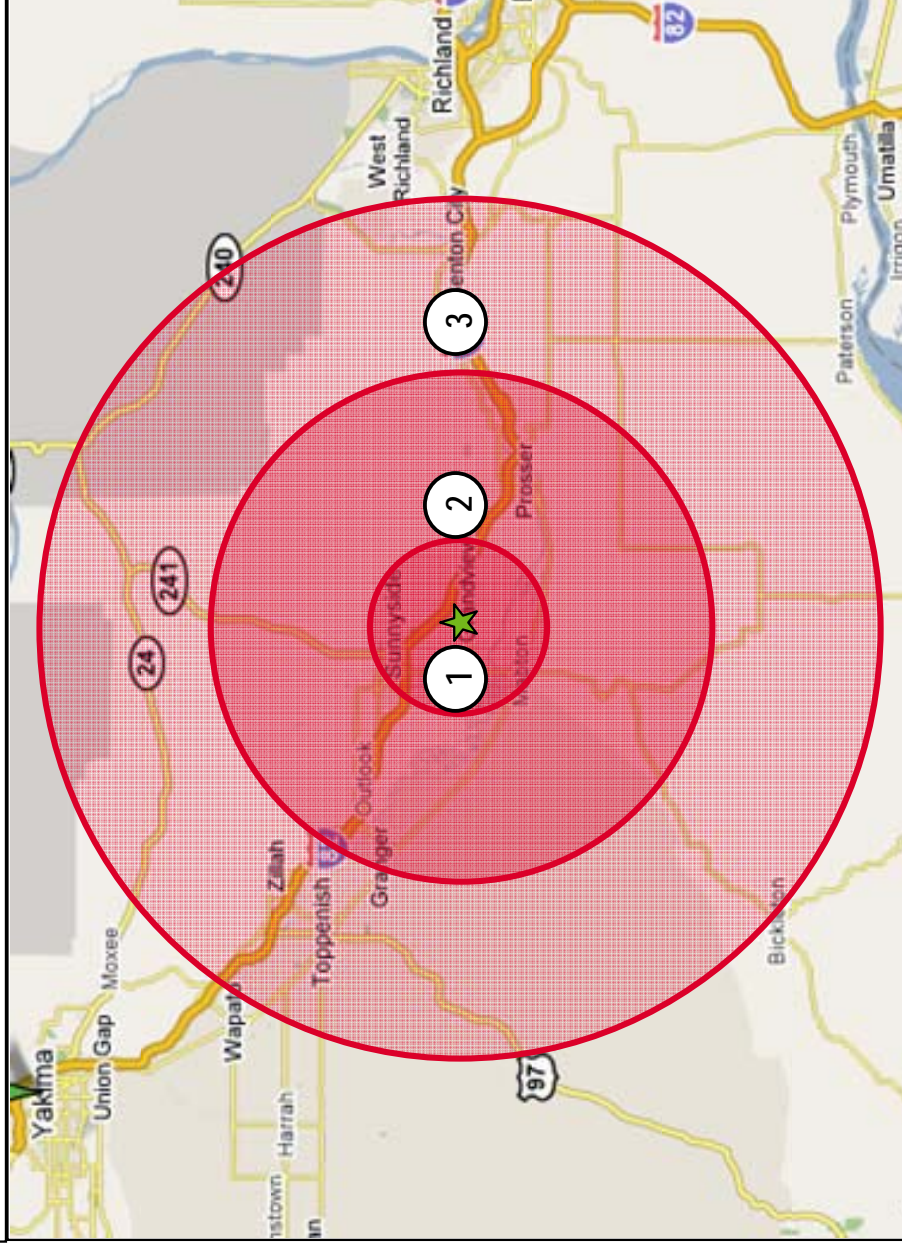
Kercheval Industrial Site
Grandview, Washington



Information updated February, 2012 and provided to you by:
New Vision, the Yakima County Development Association
10 N. 9th St. | PO Box 1387 | Yakima, WA 98907-1387 | 509.575.1140 | info@ycda.com | www.ycda.com
Information was obtained from sources deemed to be reliable. YCDA does not, however, guarantee the accuracy of this data

Labor Radius

GRANDVIEW SITE LABOR FORCE PROXIMITY



LABOR PROXIMITY

① (5 MILES)

LABOR FORCE – 8,809

② (15 MILES)

LABOR FORCE – 25,359

③ (25 MILES)

LABOR FORCE – 38,929

Source: DemographicsNow

Information updated February, 2011 and provided to you by:

New Vision, the Yakima County Development Association

10 N. 9th St. | PO Box 1387 | Yakima, WA 98907-1387 | 509.575.1140 | info@ycda.com | www.ycda.com

Information was obtained from sources deemed to be reliable. YCDA does not, however, guarantee the accuracy of this data



Community Profile

Grandview, Washington



LOCATION

Grandview is centrally located at the midpoint of the I-82 corridor between Yakima (40 miles) and the Tri-Cities (40 miles). It is equidistant (approximately 180 miles) from Seattle, Spokane, and Portland, OR.

POPULATION

City of Grandview - 10,862
Within 15 Miles - 60,178
Within 30 Miles - 140,012

CITY GOVERNMENT

207 W. Second Street
Grandview, WA 98930
Phone: (509) 882-9200 - www.grandview.wa.us
8:00 AM to 5:00 PM (doors open at 9:00 AM)
Monday through Friday (closed legal holidays)

QUALITY OF LIFE

Our city features seven city parks, one swimming pool, one golf course, and four public tennis courts. We have parades, festivals, wine touring and wine tasting, and an active recreation program. We're also home to the Yakima Valley Fair & Rodeo and the Great Grandview Grape Stomp. Skiing, boating, hunting, and fishing are within an hour's drive.

To learn about local events and activities, click [here](#)

MUSEUM

Ray E. Powell Museum
313 Division Street - Phone: (509) 882-9219
Open By Appointment Only

LIBRARY

Grandview Library
500 Main Street - (509) 882-7034
Hours: Monday & Tuesday 1:00 p.m. - 7:00 p.m.
Wednesday & Thursday 10:00 a.m. - 5:30 p.m.
Friday & Saturday 10:00 a.m. - 3:30 p.m.

TOP AREA EMPLOYERS

JM Smuckers Company	Kenyon Zero Storage
R.E. Powell Distributing	Shonan, USA
Walmart Distribution	Welch Foods

HEALTHCARE

[Sunnyside Community Hospital](#) is within six miles with medical clinics, dentists, and physicians within city limits. Four additional hospitals are within 40 miles.

SCHOOLS

[Grandview School District](#) has three elementary schools, one middle school, and one high school (see page four for a more detailed profile).

Grandview Adventist Junior Academy is Grandview's private preschool through grade 8.