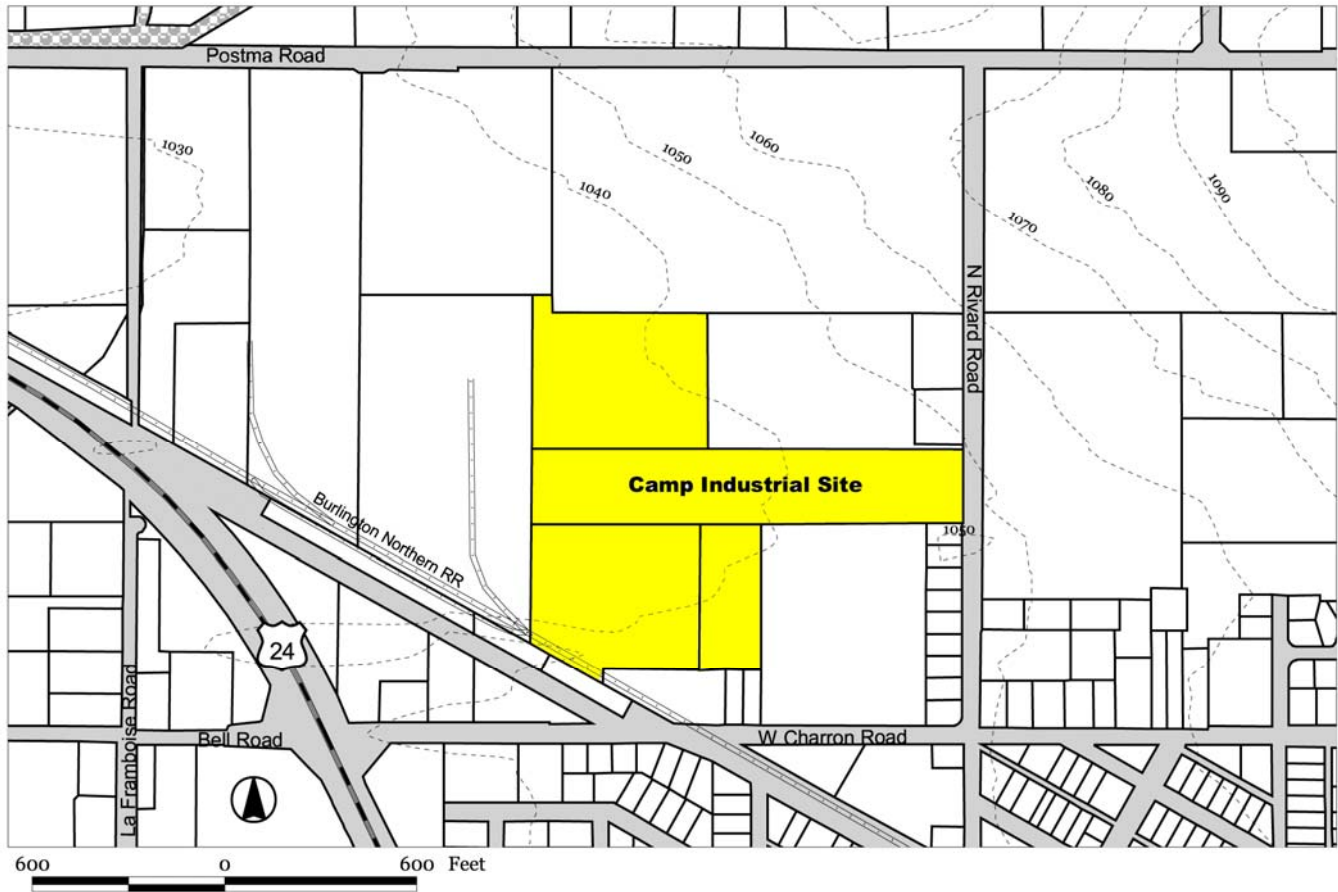


Camp Industrial Site

Moxee, Washington



Fast Facts

Land area: 20.07 acres

Building: Yes, 20,000 sqft rough warehouse

Price per acre: \$0.80 to \$1.50 per square foot

Zoning: Light Industrial

Transportation:

Rail on site

5 minutes to Interstate 82

15 minutes to Yakima Air Terminal

2.5 hours to Seattle

Water: 12" line on Rivard Road

Sewer: 8" line on Rivard Road

Natural gas: 4" line on Rivard Road

Telecommunications: Provided by Qwest Communications

Electricity: 3 phase, 12,500 volt line

Estimated labor force within 10 miles: 105,725



Contact

Dick Camp (509-248-4911)

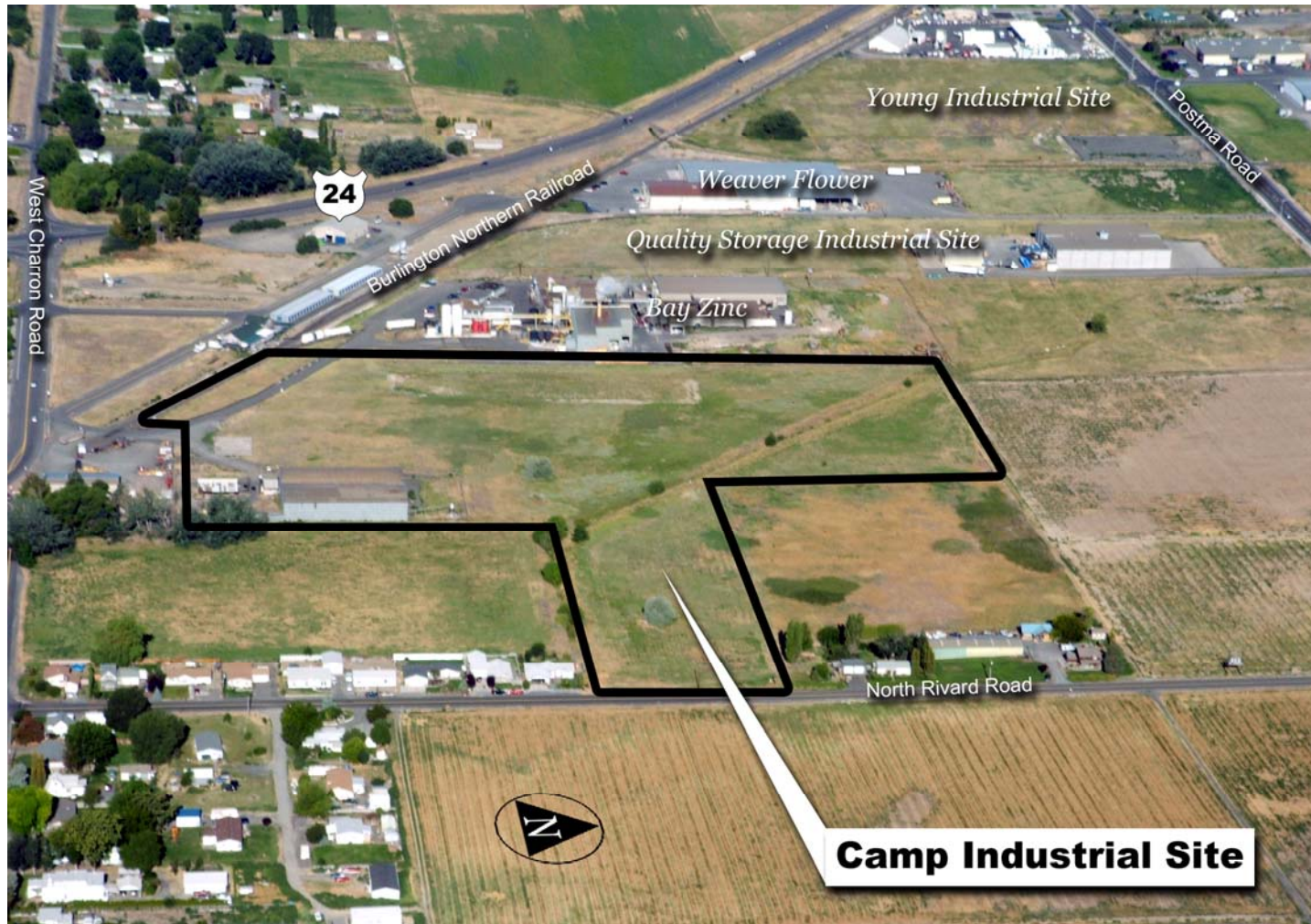
For more information and additional available buildings and industrial land, contact:

New Vision / Yakima County Development Association
10 North Ninth Street; PO Box 1387; Yakima, Washington 98907-1387
Ph. 509-575-1140, Fax 509-575-1508, www.ycda.com

Property specifications have been obtained from sources deemed to be reliable. New Vision does not, however, guarantee the accuracy of this data. All information should be verified prior to lease or purchase.

Camp Industrial Site

Moxee, Washington



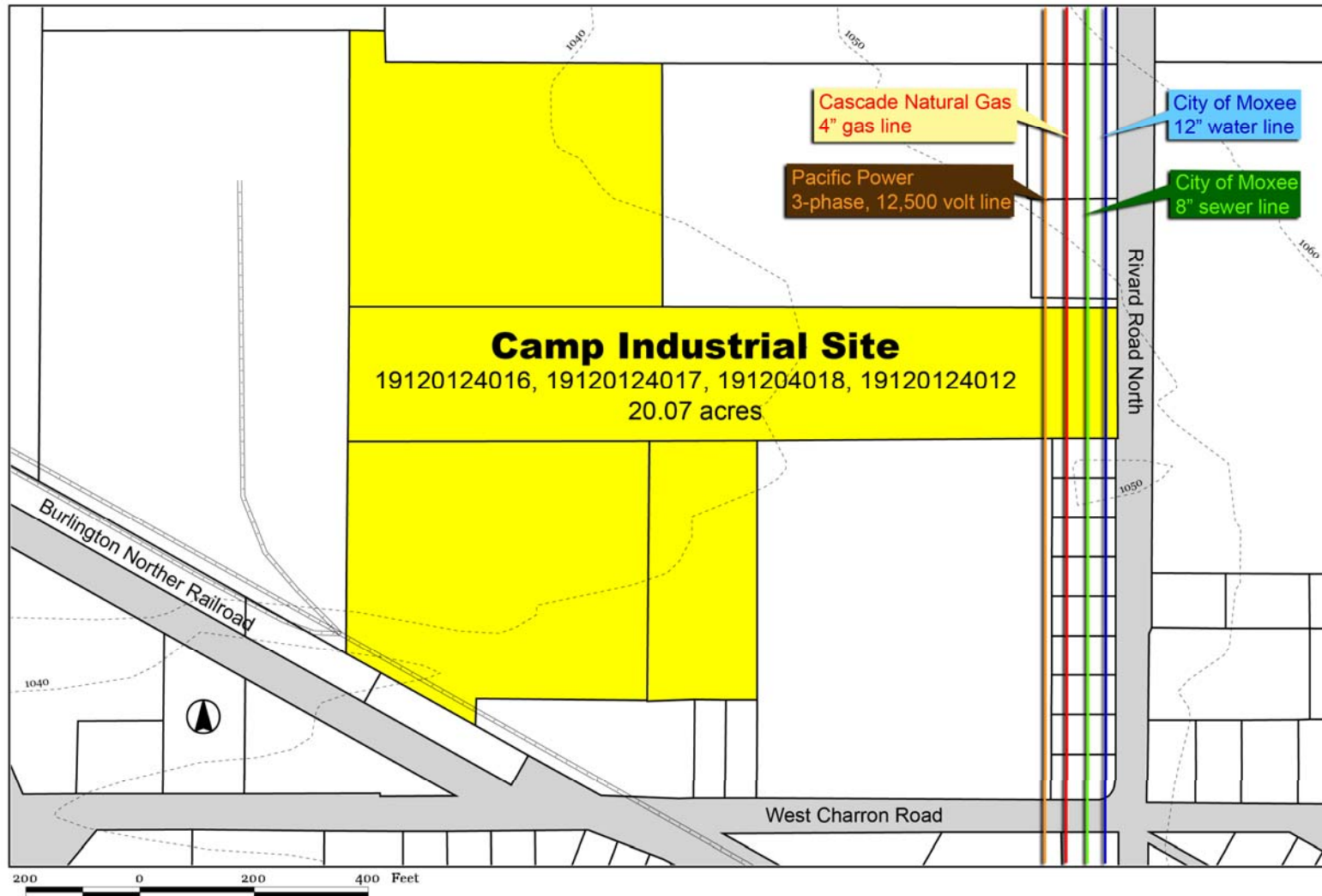
For more information and additional available buildings and industrial land, contact:

New Vision / Yakima County Development Association
10 North Ninth Street; PO Box 1387; Yakima, Washington 98907-1387
Ph. 509-575-1140, Fax 509-575-1508, www.ycda.com

Property specifications have been obtained from sources deemed to be reliable. New Vision does not, however, guarantee the accuracy of this data. All information should be verified prior to lease or purchase.

Camp Industrial Site

Moxee, Washington

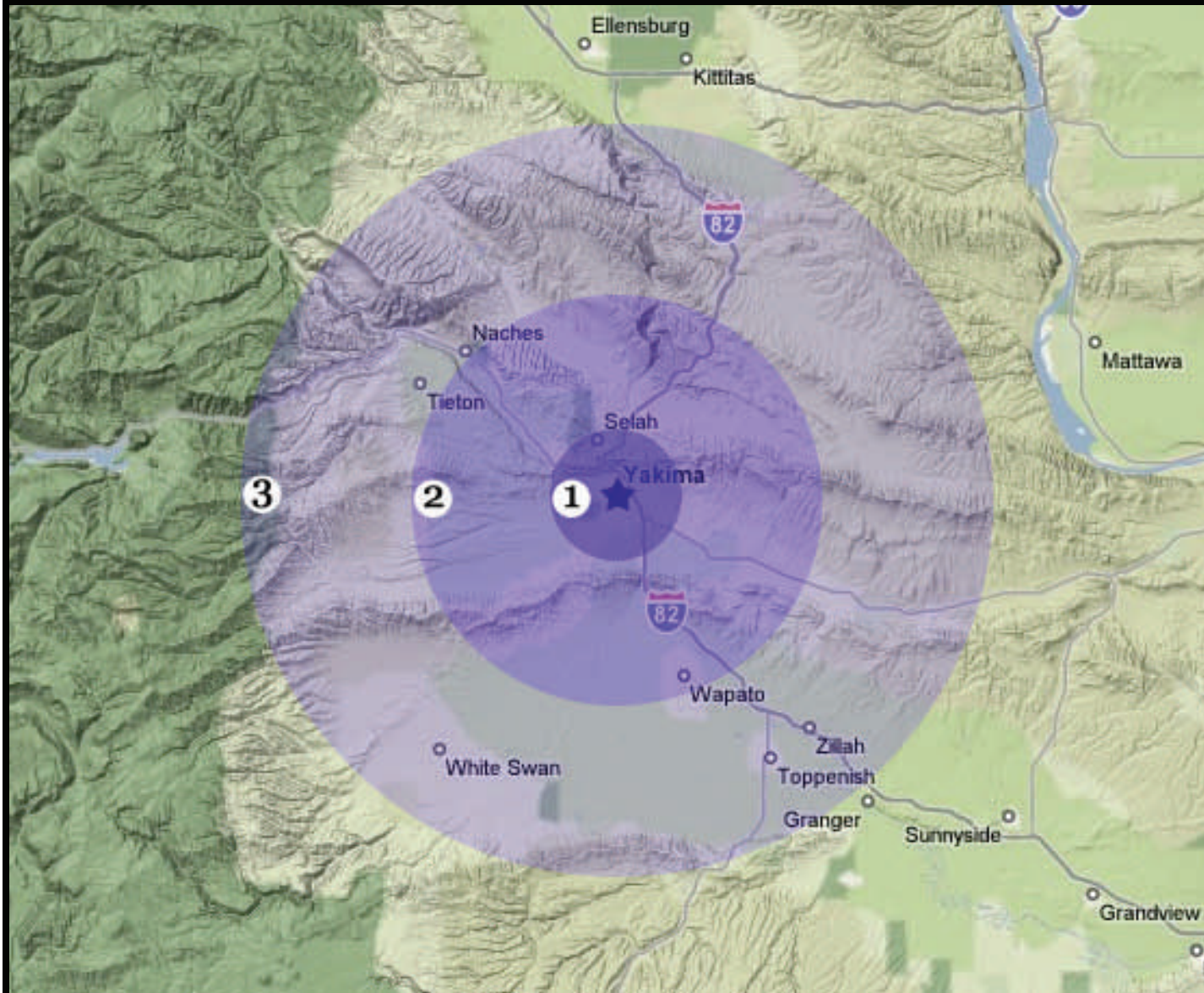


For more information and additional available buildings and industrial land, contact:

New Vision / Yakima County Development Association
10 North Ninth Street; PO Box 1387; Yakima, Washington 98907-1387
Ph. 509-575-1140, Fax 509-575-1508, www.ycda.com

Property specifications have been obtained from sources deemed to be reliable. New Vision does not, however, guarantee the accuracy of this data.
All information should be verified prior to lease or purchase.

Labor Force Proximity Map



YAKIMA COUNTY, WA

Upper Yakima Valley

Workforce Radius

1 (5 Miles)
Labor Force = 51,312

2 (15 miles)
Labor Force = 75,202

3 (30 Miles)
Labor Force = 88,704



New Vision, The Yakima County Development Association

10 N 9th St. | PO Box 1387 | Yakima, WA 98907 | Ph. 509.575.1140 | Fax 509.575.1508
email: info@ycda.com | web: www.ycda.com