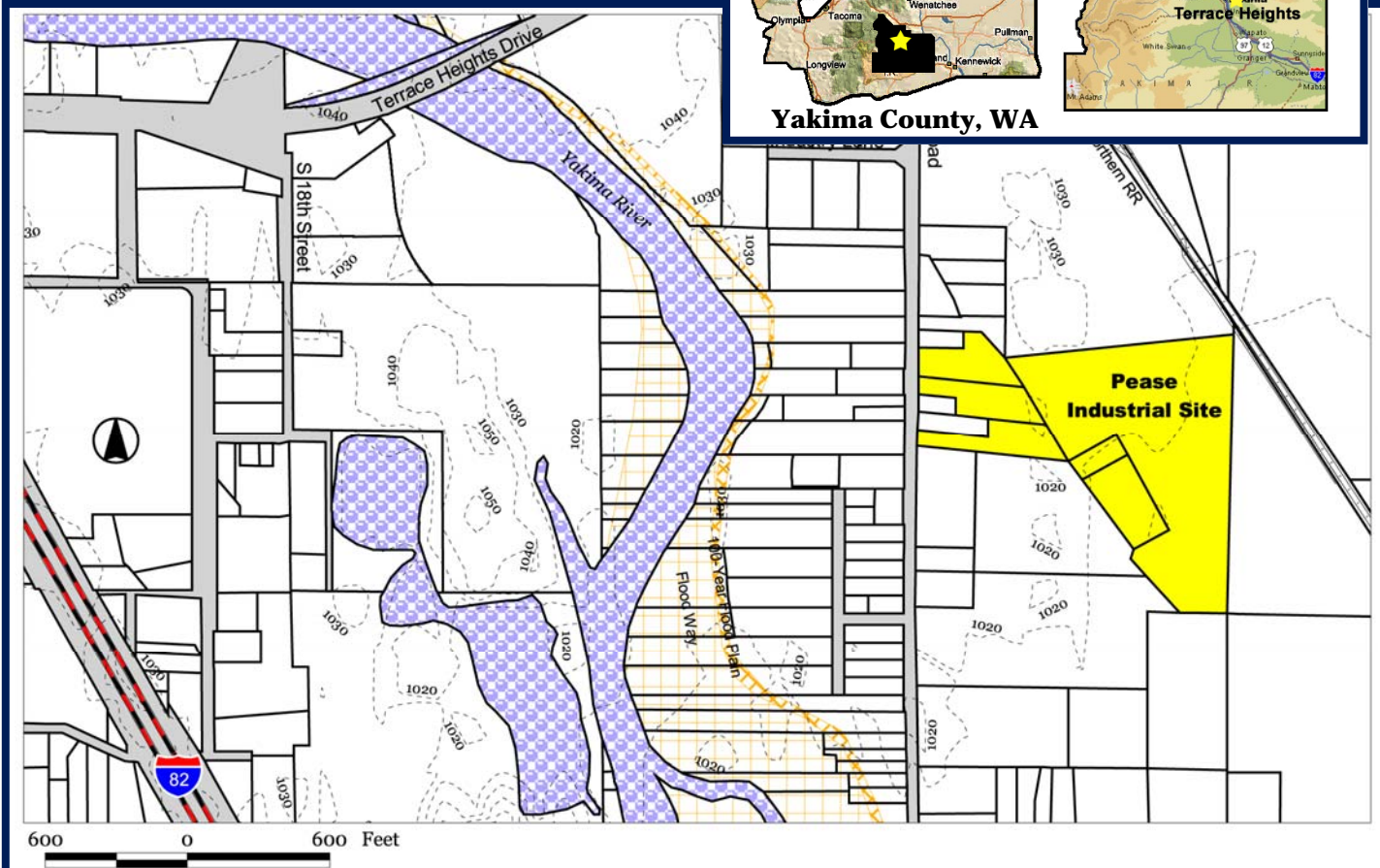


Pease Industrial Park

Terrace Heights, WA (unincorporated Yakima County)



403 KEYS RD., Yakima (Terrace Heights), Washington

FAST FACTS

Land area: 20.39 acres
Building: No
Price: \$995,000
Zoning: Light Industrial
Transportation:
 Adjacent to rail
 2 minutes to Interstate 82
 15 minutes to Yakima Air Terminal
 2.5 hours to Seattle
Water: 12" line at site on Keys Road
Sewer: 12" 0.5 mile east
Natural gas: Provided by Cascade Natural Gas
Telecommunications: Provided by Qwest
Electricity: Provided by Pacific Power and Light
Estimated labor force within 30 miles: 105,500



CONTACT INFO

JoAnn Houfek, Windermere Real Estate
 509.834.2372 or 509.965.6655; joho@windermere.com
Dave McFadden or Lisa Smith, YCDA
 509.575.1140
 davemc@ycda.com or lisa@ycda.com

Information updated October, 2009 and provided by:

Yakima County Development Association

10 N. 9th St. | PO Box 1387 | Yakima, WA 98907-1387 | 509.575.1140 | info@ycda.com | www.ycda.com

Information was obtained from sources deemed to be reliable. YCDA does not, however, guarantee the accuracy of this data.



Pease Industrial Site
Terrace Heights, WA (unincorporated)

Aerial View



Information updated January, 2010 and provided by:
Yakima County Development Association

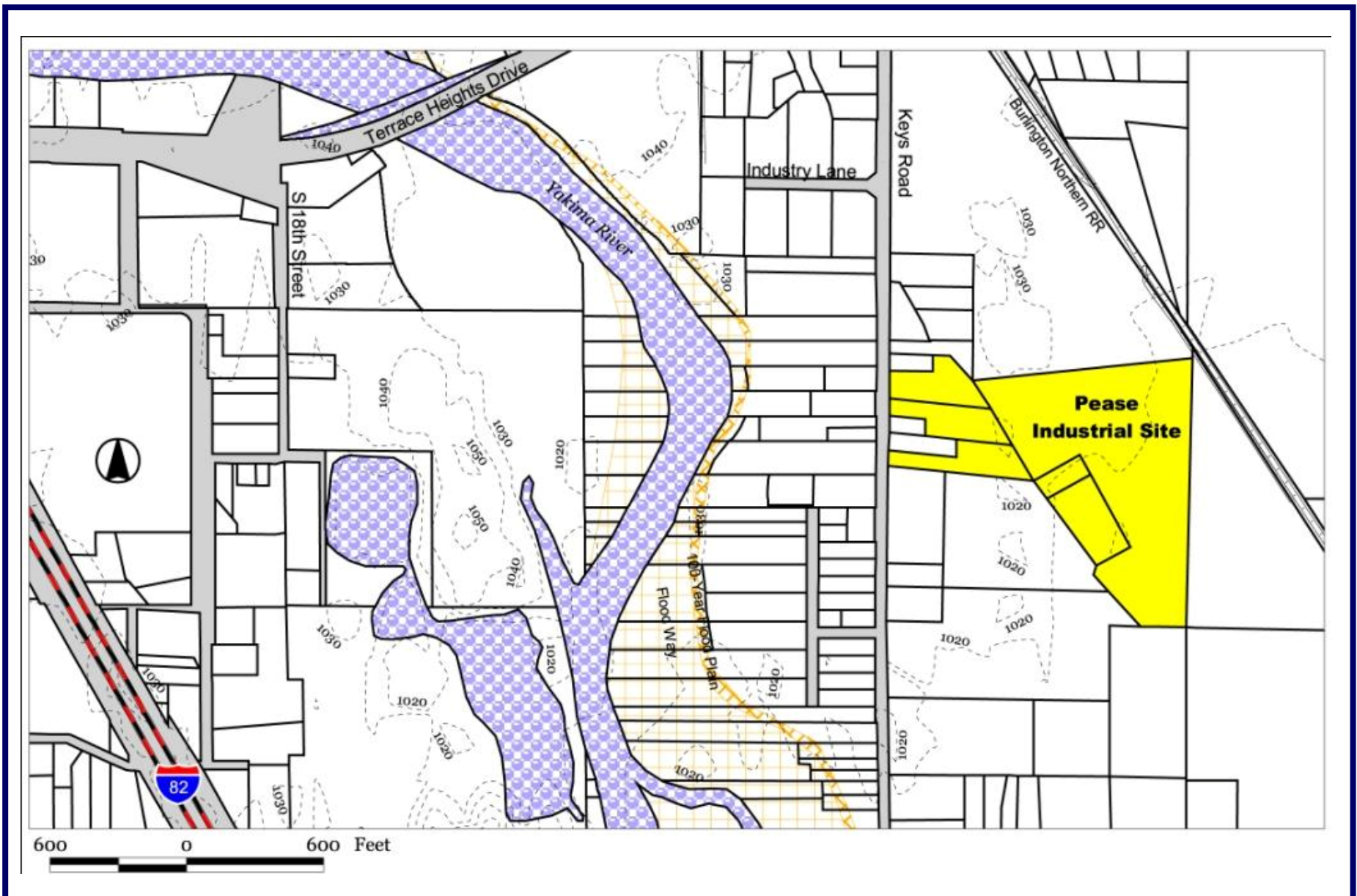
10 N. 9th St. | PO Box 1387 | Yakima, WA 98907-1387 | 509.575.1140 | info@ycda.com | www.ycda.com

Information was obtained from sources deemed to be reliable. YCDA does not, however, guarantee the accuracy of this data.



Pease Industrial Site

Terrace Heights, WA (unincorporated Yakima County)



Information updated January, 2010 and provided by:

Yakima County Development Association

10 N. 9th St. | PO Box 1387 | Yakima, WA 98907-1387 | 509.575.1140 | info@ycda.com | www.ycda.com

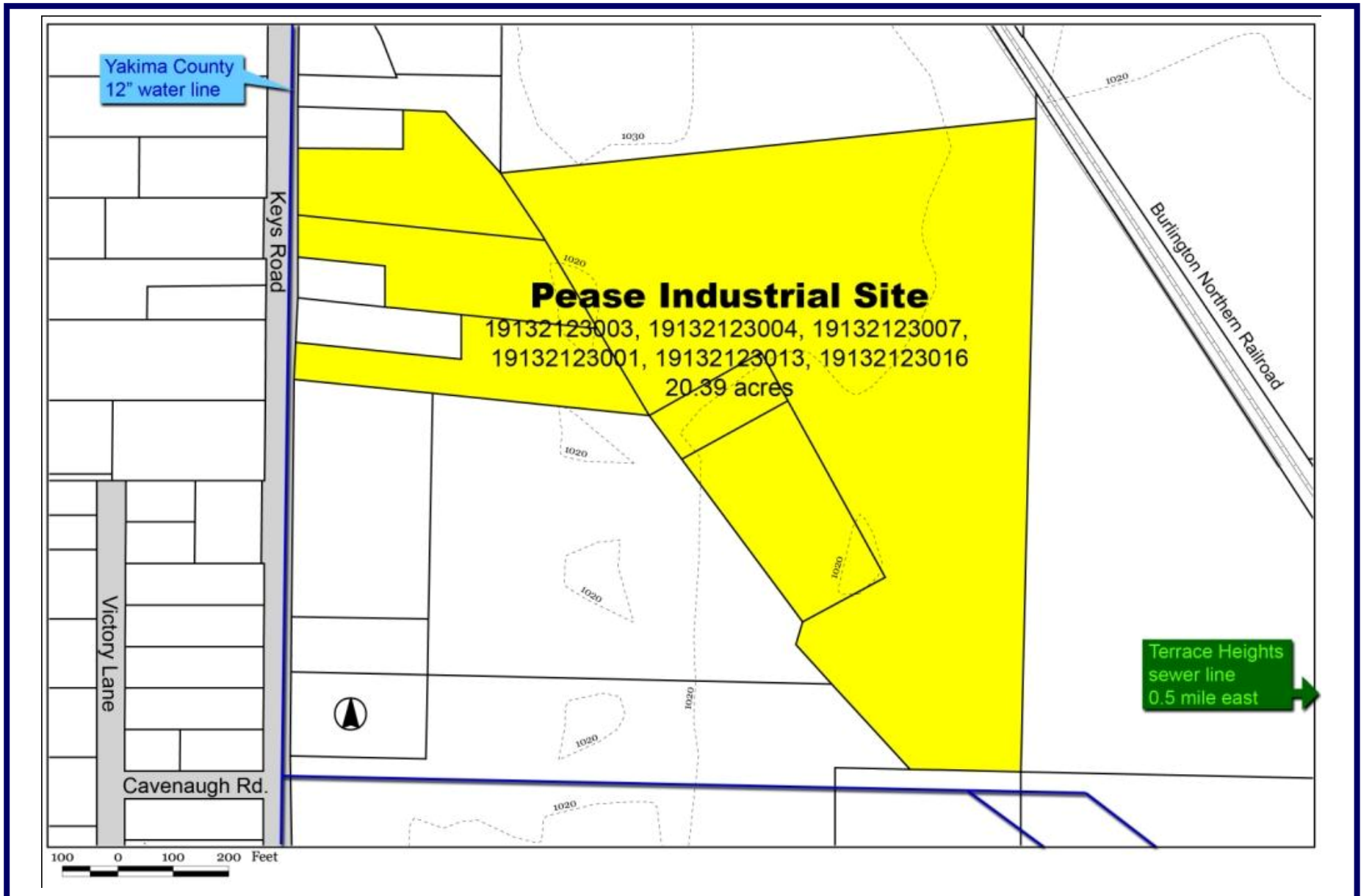
Information was obtained from sources deemed to be reliable. YCDA does not, however, guarantee the accuracy of this data.



Pease Industrial Site

Terrace Heights, WA (unincorporated)

Utility Detail



Information updated January, 2010 and provided by:
Yakima County Development Association

10 N. 9th St. | PO Box 1387 | Yakima, WA 98907-1387 | 509.575.1140 | info@ycda.com | www.ycda.com

Information was obtained from sources deemed to be reliable. YCDA does not, however, guarantee the accuracy of this data.



