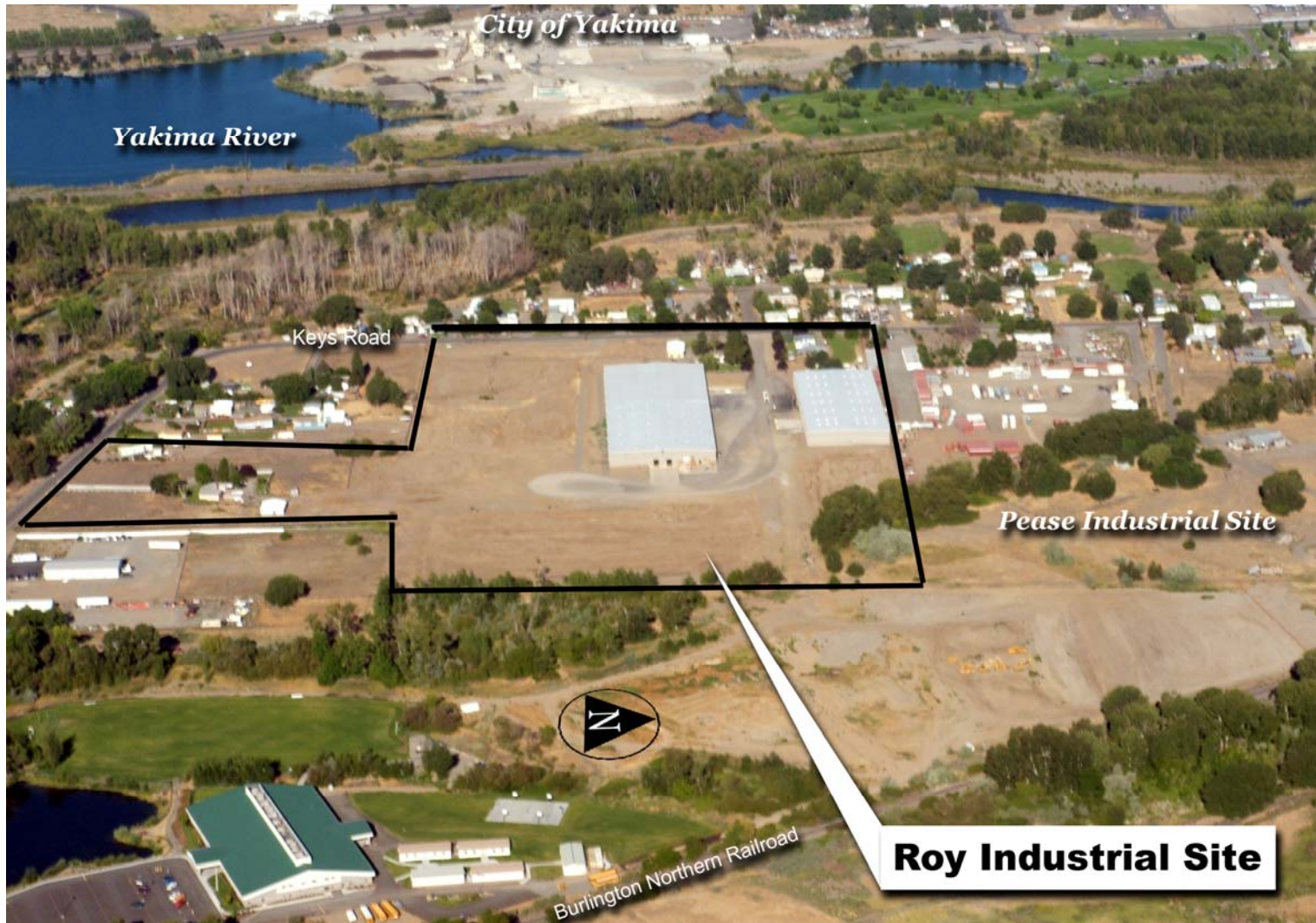


Roy Industrial Site

Terrace Heights, WA (unincorporated Yakima County)



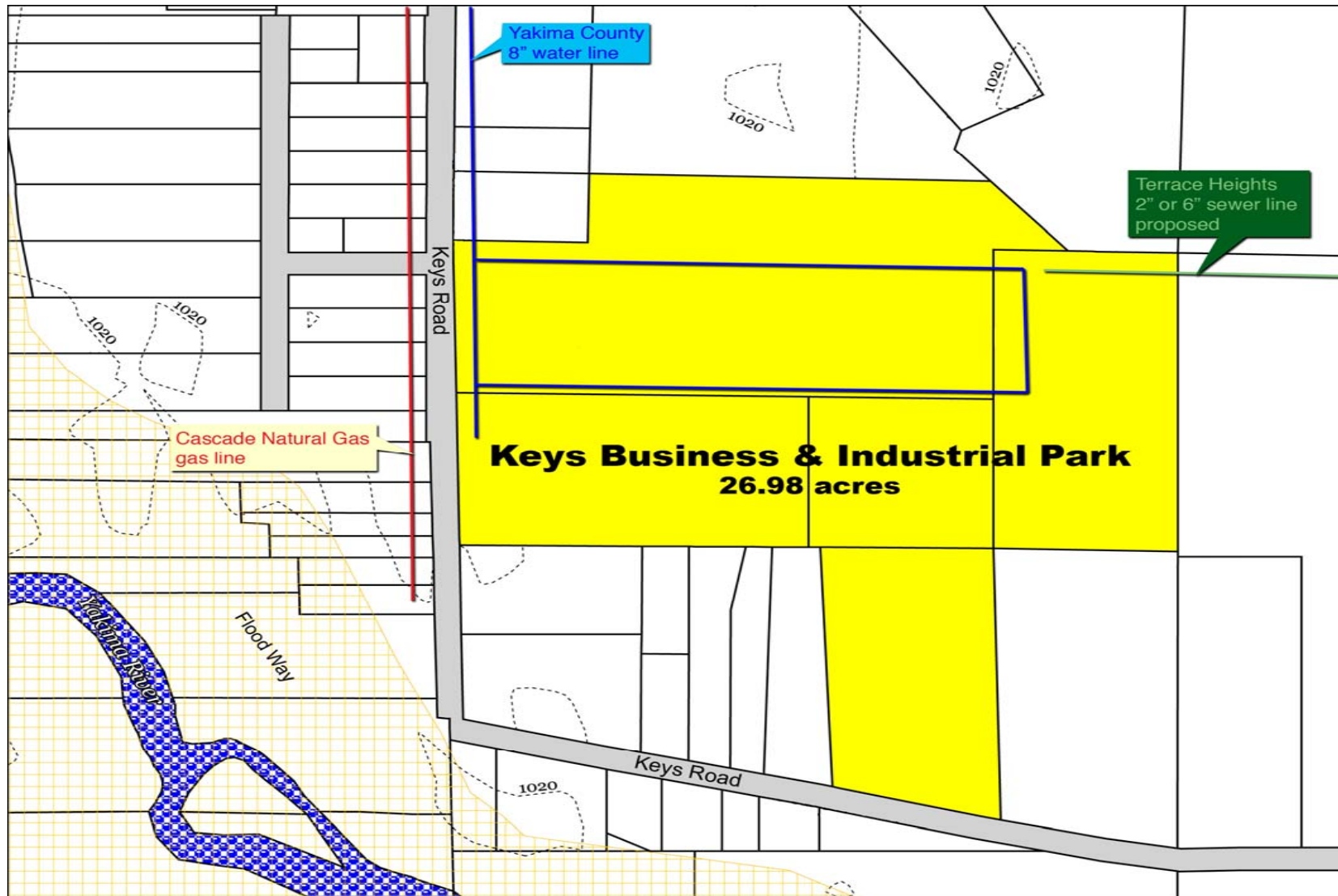
For more information and additional available buildings and industrial land, contact:

New Vision / Yakima County Development Association
10 North Ninth Street; PO Box 1387; Yakima, Washington 98907-1387
Ph. 509-575-1140, Fax 509-575-1508, www.ycda.com

Property specifications have been obtained from sources deemed to be reliable. New Vision does not, however, guarantee the accuracy of this data.
All information should be verified prior to lease or purchase.

Roy Industrial Site

Terrace Heights, WA (unincorporated Yakima County)



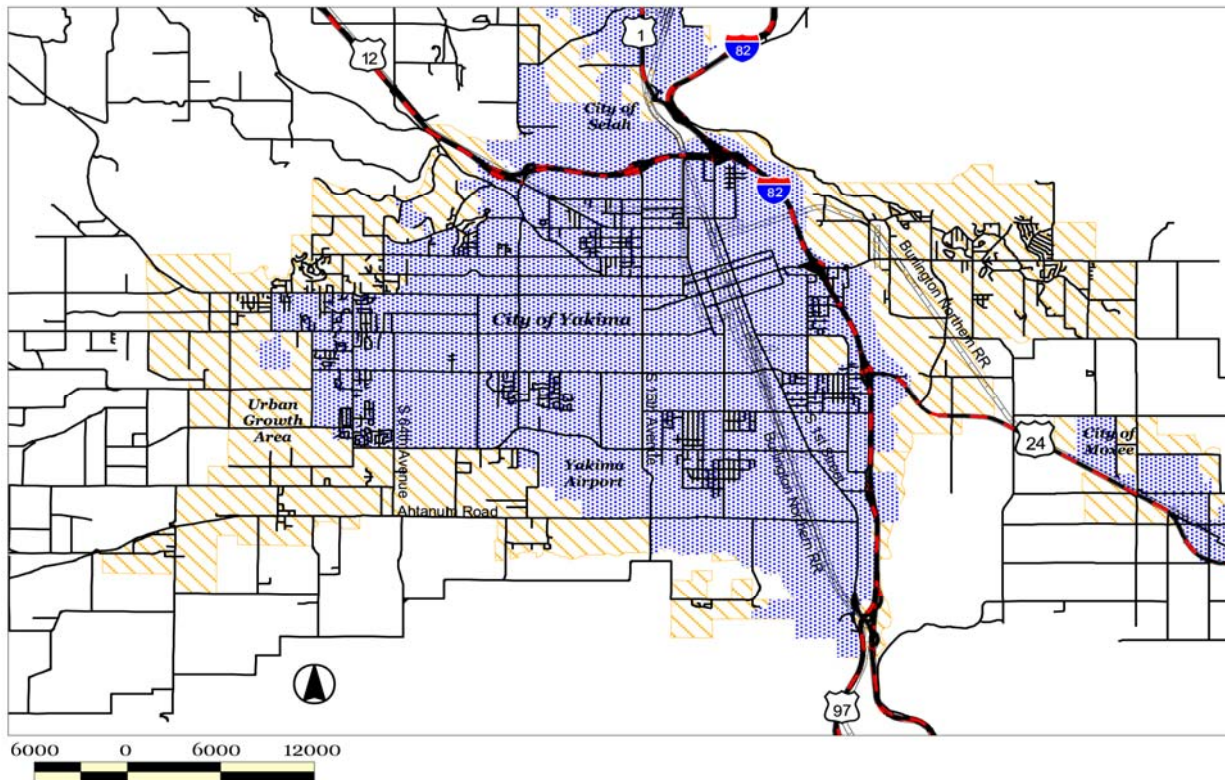
For more information and additional available buildings and industrial land, contact:

New Vision / Yakima County Development Association
10 North Ninth Street; PO Box 1387; Yakima, Washington 98907-1387
Ph. 509-575-1140, Fax 509-575-1508, www.ycda.com

Property specifications have been obtained from sources deemed to be reliable. New Vision does not, however, guarantee the accuracy of this data.
All information should be verified prior to lease or purchase.

Community Profile

Yakima, Washington



Contacts

Bill Cook, Director
Community & Economic Development
City of Yakima
129 N 2nd Street
Yakima, WA 98901
1-509-575-6227
bcook@ci.yakima.wa.us

David McFadden, President
Yakima County Development Association
10 North 9th Street
Yakima, WA 98905
1-509-575-1140
newvision@ycda.com

Population

City of Yakima: 84,312
Within 15 miles: 156,467
Within 30 miles: 211,424

Government

Form: Council/Manager. The seven-person council is elected by the citizens of Yakima to 4-year terms. The council elects the mayor to a 1-year term.

Taxes and fees:

- State Sales Tax: 6.5%
- Local City Tax: 1.7%
- Washington State has no corporate income, unitary, or inventory tax nor tax on interest, dividends, or capital gains.

All other taxes: <http://dor.wa.gov/content/taxes/>

Location

Yakima is located in South Central Washington where the Naches and Yakima Rivers join. It is centrally located on the I-82 corridor - 140 miles from Seattle, 196 miles from Spokane and 188 miles from Portland. - with direct access to I-82, I-90, US Routes 12 and 97, and State Routes 22, 24, 241 and 410.

Quality of Life

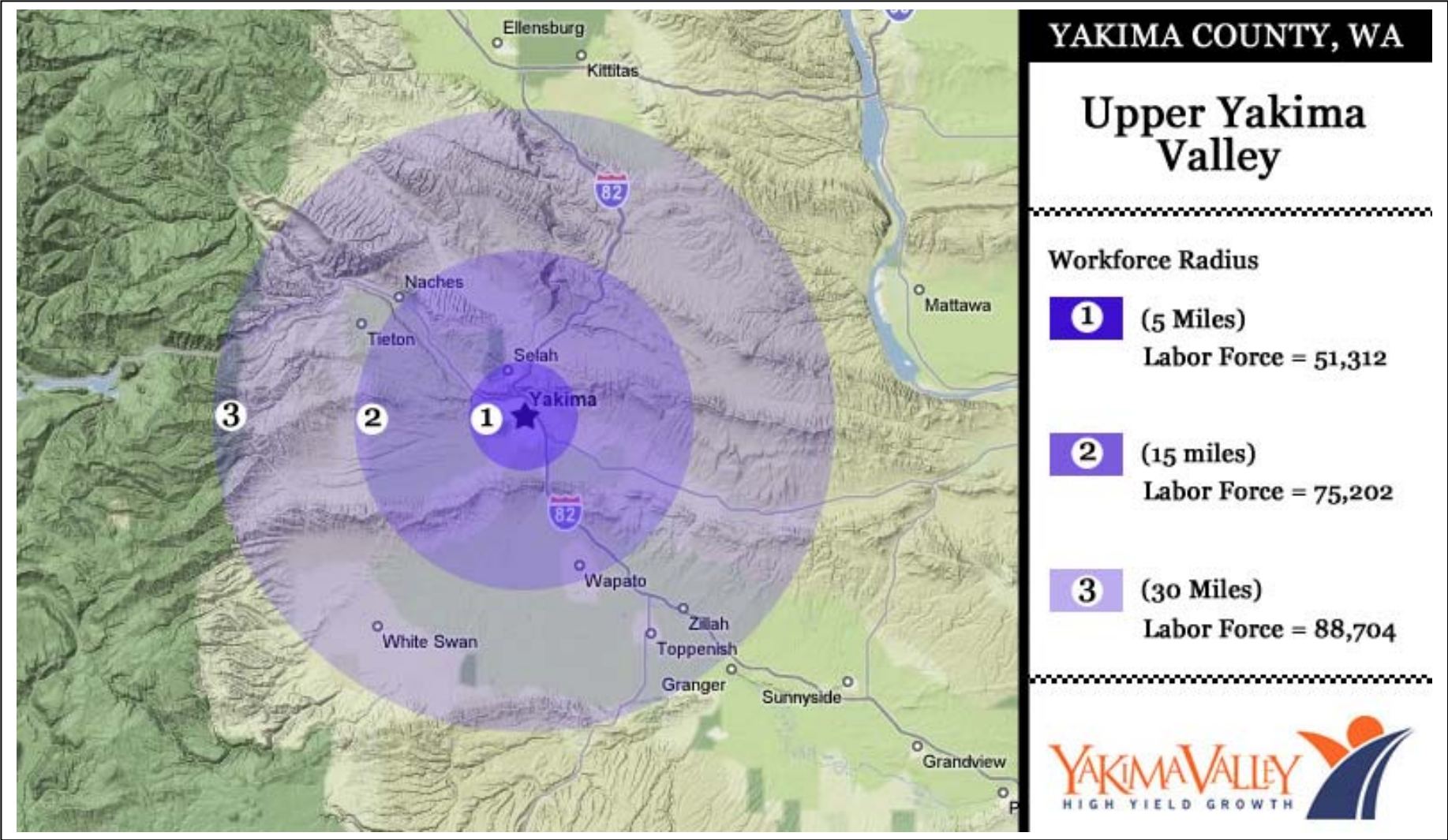
Recreation: There are 63 historic and culturally significant sites, art galleries, libraries, museums, State parks, two professional sports teams, fishing, hunting, skiing, camping, hiking, rafting and boating.
Housing: The median sale price is \$130,000.
Schools: Yakima has 14 elementary schools, 4 middle schools and three high schools. There are early childhood, specialized and alternative schools. Yakima has a Community College and a Technical Institute.
Churches: Yakima has churches of all denominations.
Media: Several newspapers, all major TV stations, 15 radio stations in English & Spanish.

Large employers in the area:

Yakima Valley Memorial Hosp	Snokist
Yakima School District	Del Monte – Yakima
Yakima Regional Hosp	Yakima County
Shields Bag & Printing	Washington Fruit

For information about available buildings and industrial land, contact:
New Vision / Yakima County Development Association
10 North Ninth Street; PO Box 1387; Yakima, Washington 98907-1387
Ph. 509-575-1140, Fax 509-575-1508, www.ycda.com

Labor Radius Map



For information about available buildings and industrial land, contact:
New Vision / Yakima County Development Association
10 North Ninth Street, PO Box 1387, Yakima, Washington 98907-1387
Ph. 509-575-1140, Fax 509-575-1508, www.ycda.com